

# library hotel

When gathering with colleagues, or entertaining your clients or loved ones, the Library Hotel offers a selection of some of the most distinctive special event spaces in New York City to suit your needs. From warm and traditional to softly contemporary, the spaces at the Library Hotel are the perfect choice for daytime meetings, press events, cocktail receptions or social events. Both the Writer's Den and Poetry Garden are located on the 14th floor of the hotel connected by a stylish granite-topped bar entry room (250 sq ft).

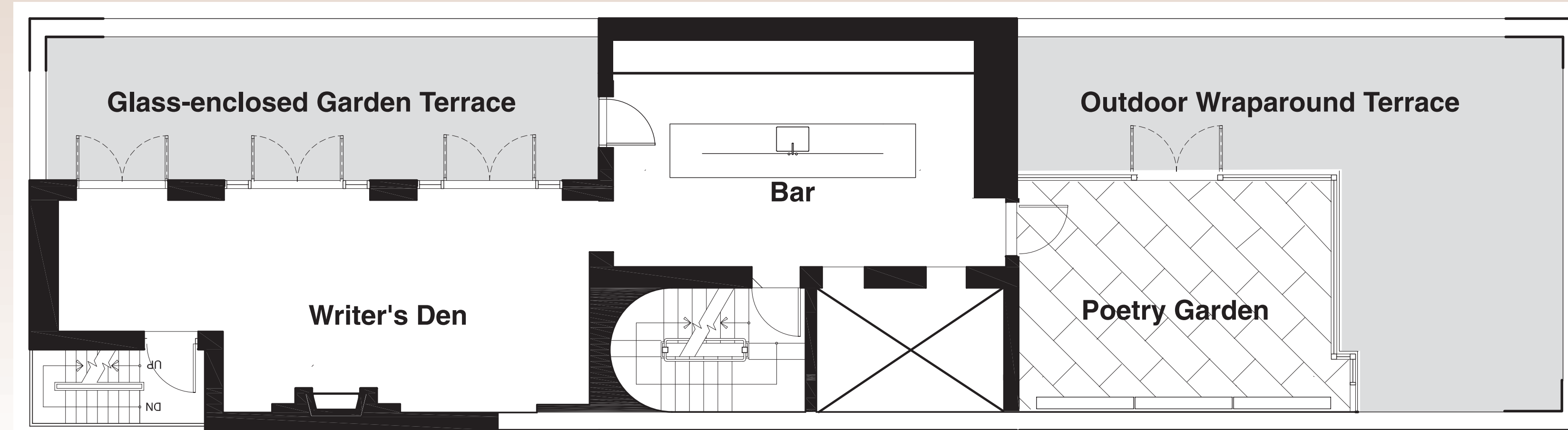


The Writer's Den reaffirms the concept that the hotel emulates a private club featuring a mahogany-paneled sitting room with overstuffed chairs, couches, 42" flat paneled television with DVD & laptop capabilities and a gas burning fireplace creating an atmosphere of the quiet coziness of one's own living room. The space also offers a glass-enclosed garden terrace that can be used year long with additional tables and seating.

The Writer's Den is 360 sq ft. The Glass-enclosed terrace is 300 sq ft.

Writer's Den Capacity:

- Conference - 20 ppl
- Theater - 30 ppl
- Banquet - 30 ppl
- Classroom - 30 ppl
- Reception - 60 ppl



The Poetry Garden provides a charming garden greenhouse sitting room outfitted in wicker furnishings with a beautiful wraparound outdoor terrace that draws spectacular views of the Public Library and surrounding New York City architecture.

Poetry Garden is 260 sq ft.  
Wrap-around Terrace is 520 sq ft.

Poetry Garden Capacity:

- Conference - 12 ppl
- Theater - 15 ppl
- Banquet - 20 ppl
- Reception - 20 to 60 ppl (including terrace)

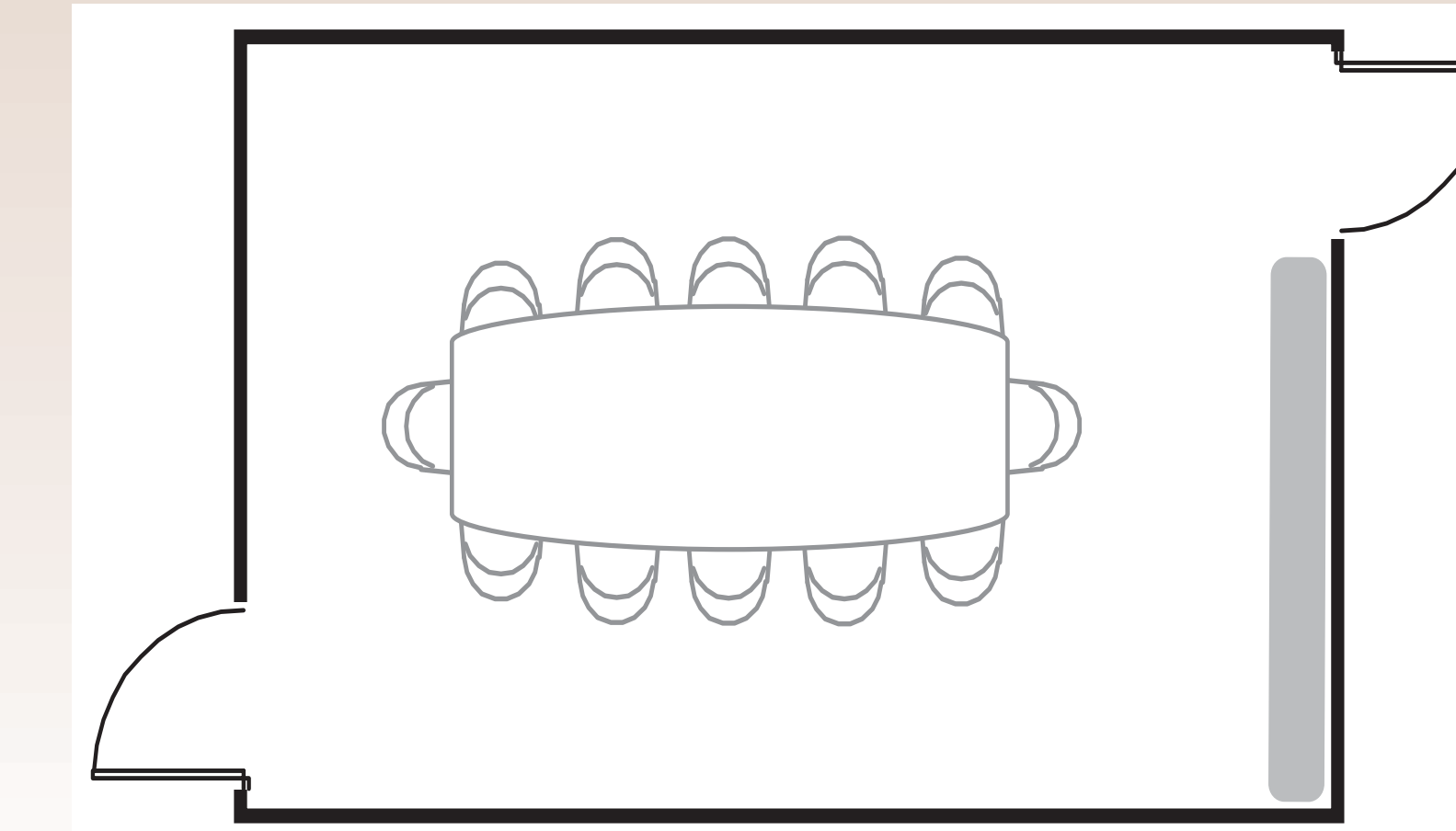
Executive Inspiration Boardroom: Up to 12 executives may find inspiration and can strategize in the ultimate comfort of our 15th floor Penthouse level conference room featuring a boardroom table with 12 padded chairs, over-sized windows, polycom conference telephone, full-size presentation screen, television with VCR & DVD capabilities, writing pads, pens, flip charts, and data-ports with complimentary wireless and high-speed Internet access.

The Executive Boardroom is 312 sq ft.

Executive Boardroom Capacity:

- Conference - 12 ppl

The Library Hotel is now a smoke free environment.



Executive Inspiration Boardroom

# HOTEL GIRAFFE

Our retro-glamorous, 1,300-square foot, 12th floor Penthouse Piano Suite provides the perfect setting for an elegant cocktail reception, intimate dinner, corporate meeting or wedding reception. Spacious and airy, the salon of the Piano Suite features a 26ft vaulted barrel ceiling, dramatic views of Manhattan, wrap-around glass wall with a working stone fireplace and an ebony baby grand piano. Floor to ceiling French Doors offer access to the adjoining exquisite 700-square foot landscaped roof-top garden. A second set of French doors open onto a private balcony terrace offering stunning views of Park Avenue South and New York City landmarks including Madison Square Park, New York Life building and the top of the Empire State building.



## Penthouse Piano Suite

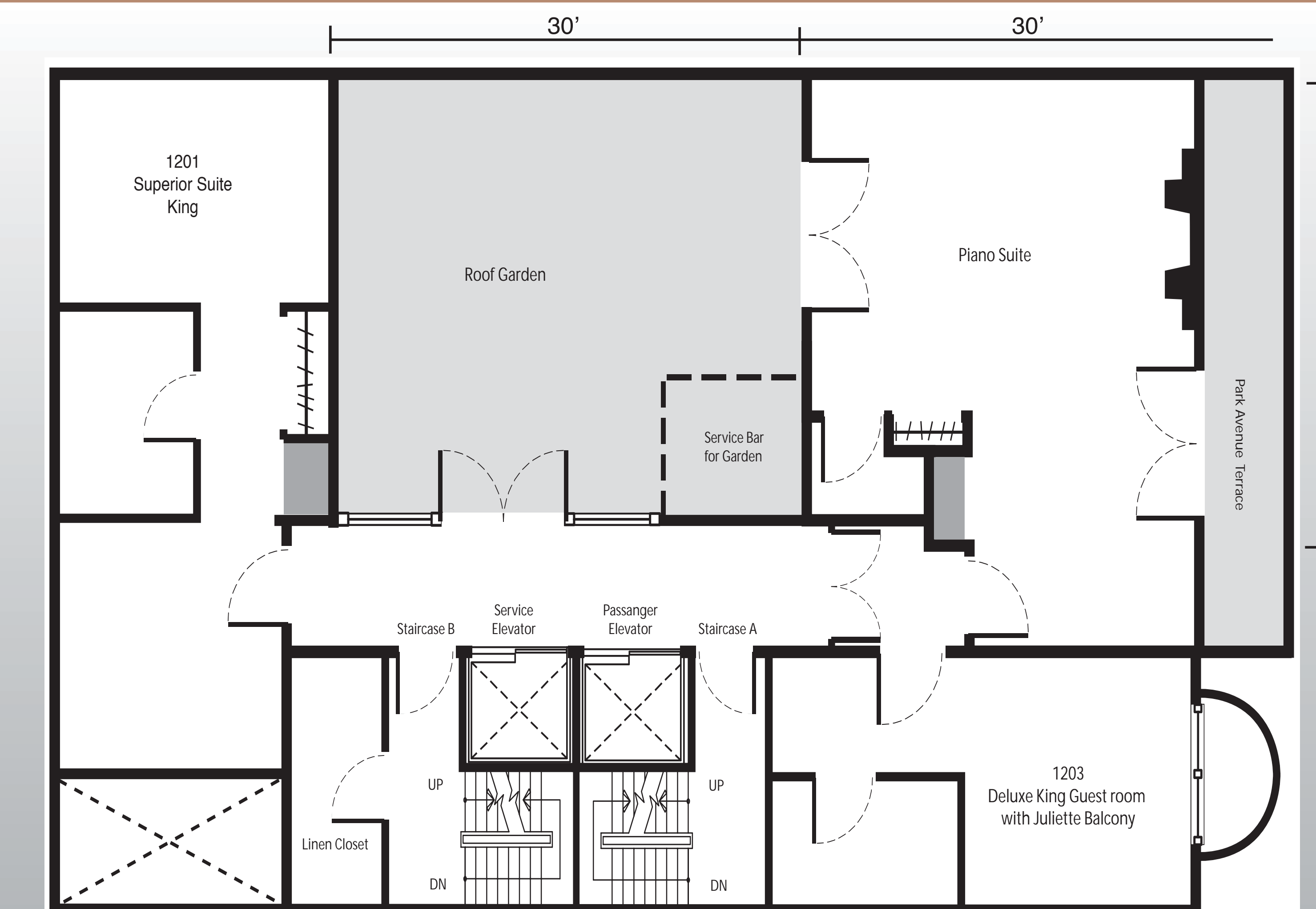
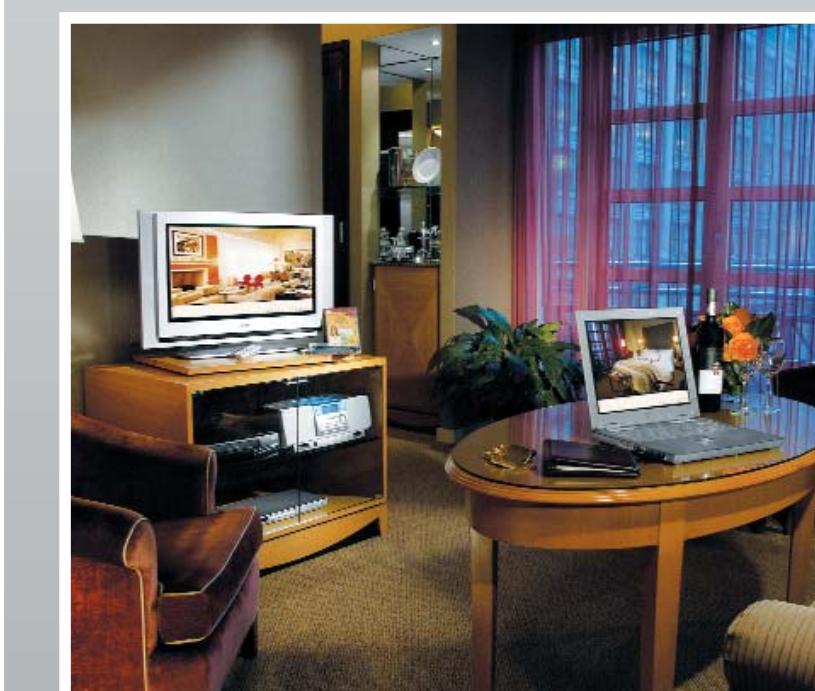
Dimensions: 30 ft x 24 ft

Capacity:

- Piano Suite and Garden: 125 ppl
- Garden Cocktail Reception: 50 ppl
- Piano Suite:
  - Cocktail Reception: 60 ppl
  - Conference Style: 20 ppl
  - Theatre Setting: 30 ppl
  - Classroom Style: 18 ppl
  - Banquet Style: 40 ppl

Deluxe king-bedded accommodations with a private balcony is adjacent to the suite.

The Penthouse floor also includes a one-bedroom 385sq ft suite and living room.



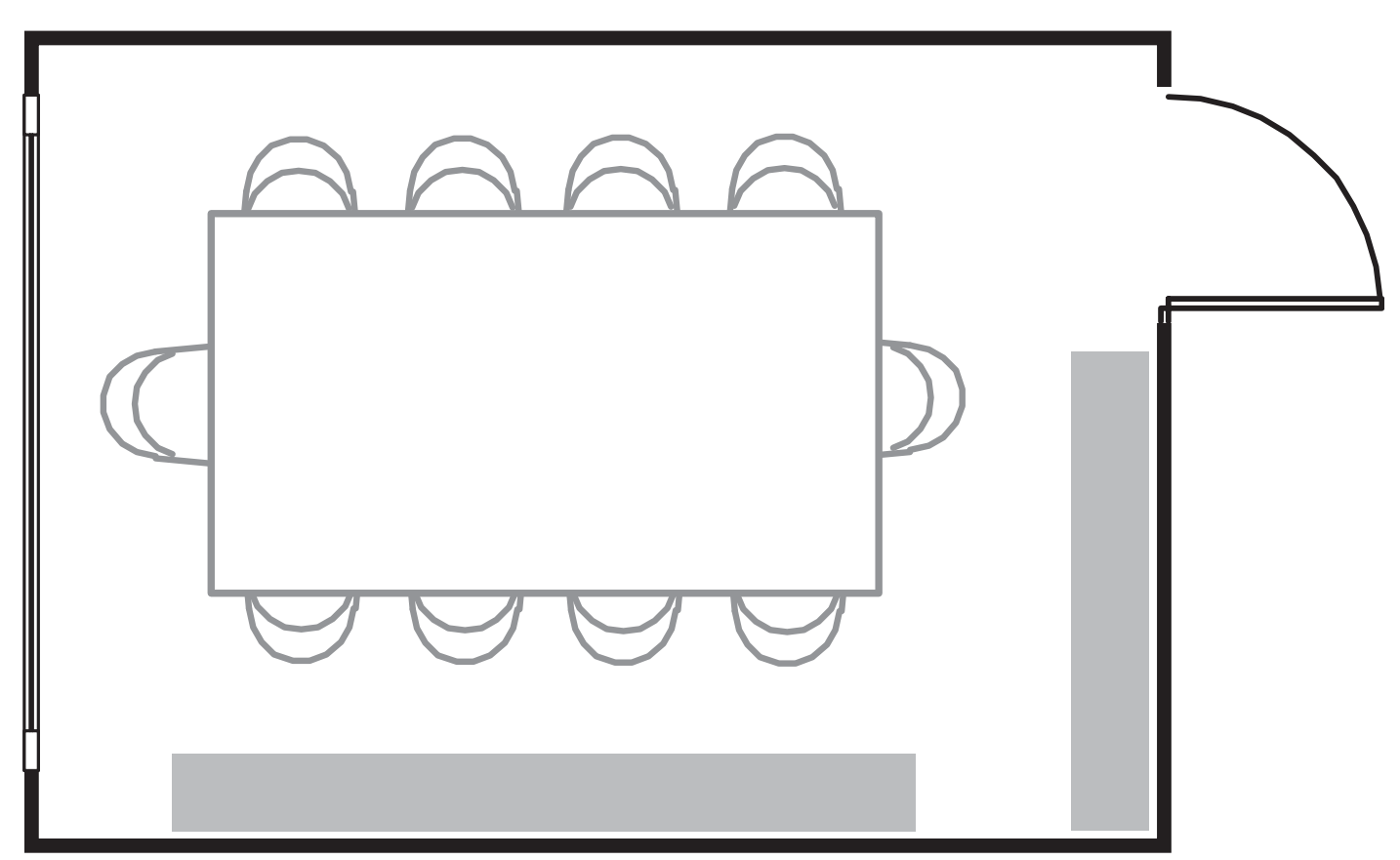


The Elysée Board Room is on the 2nd floor of the Hotel just off the Club Room. It has a speaker phone and wireless internet capabilities. Near both, is the Library perfect for small informal meetings.

Dimensions:  
Board Room - 13 ft x 18 ft

Capacity:  
Board Room - 8 to 10  
Library - 4 to 6

To schedule your event contact the Elysée Hotel at [events@elyseehotel.com](mailto:events@elyseehotel.com) or 212-204-4626

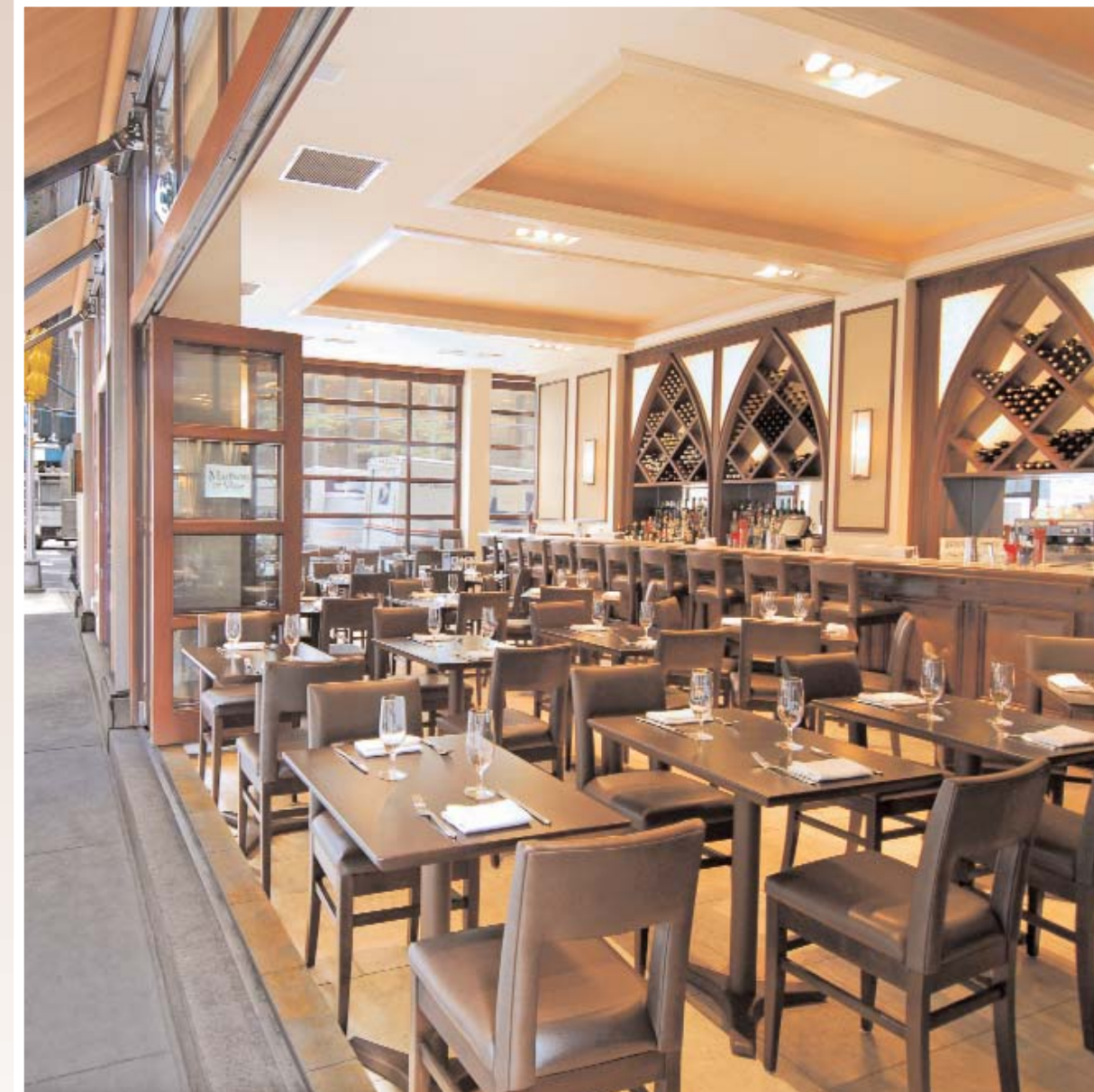


## RESTAURANTS IN OUR HOTELS

### Madison & Vine

AT THE LIBRARY HOTEL

The new American Bistro and International Wine Bar just off the lobby at the Library Hotel. Casually elegant, it's sure to become one of the neighborhood's most popular spots to enjoy a quick bite and a glass of wine or an exquisite meal.



### BARNA

AT THE HOTEL GIRAFFE

Savor New American Cuisine with an exotic Spanish flair plus a selection of great wines and inventive cocktails.

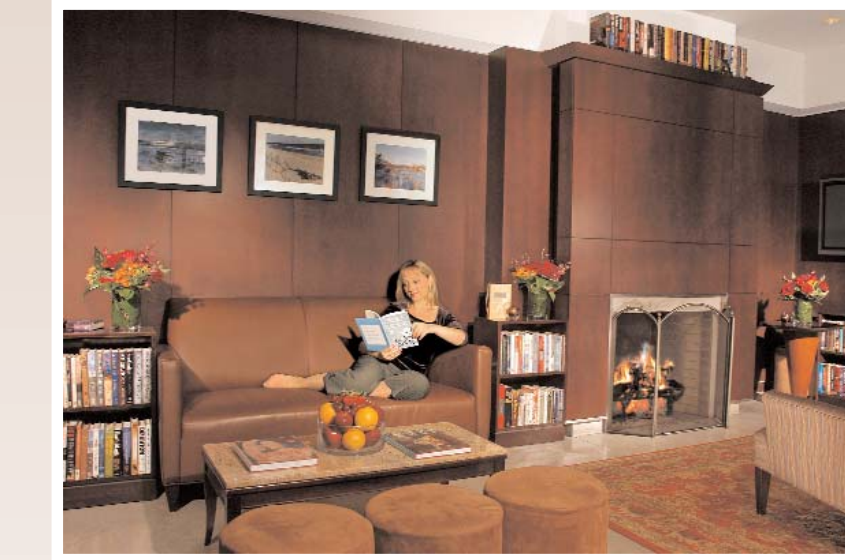
Barna Restaurant and Lounge offers guests a luminous and flavorful setting for dining and socializing.



## Meetings and Special Events Guide



LIBRARY HOTEL  
299 Madison Avenue  
New York, NY 10017



Unique Hotel concepts...

Key locations...

Unparalleled Hospitality...

HOTEL GIRAFFE  
365 Park Avenue South  
New York, NY 10016



HOTEL ELYSEE  
60 East 54th Street  
New York, NY 10022



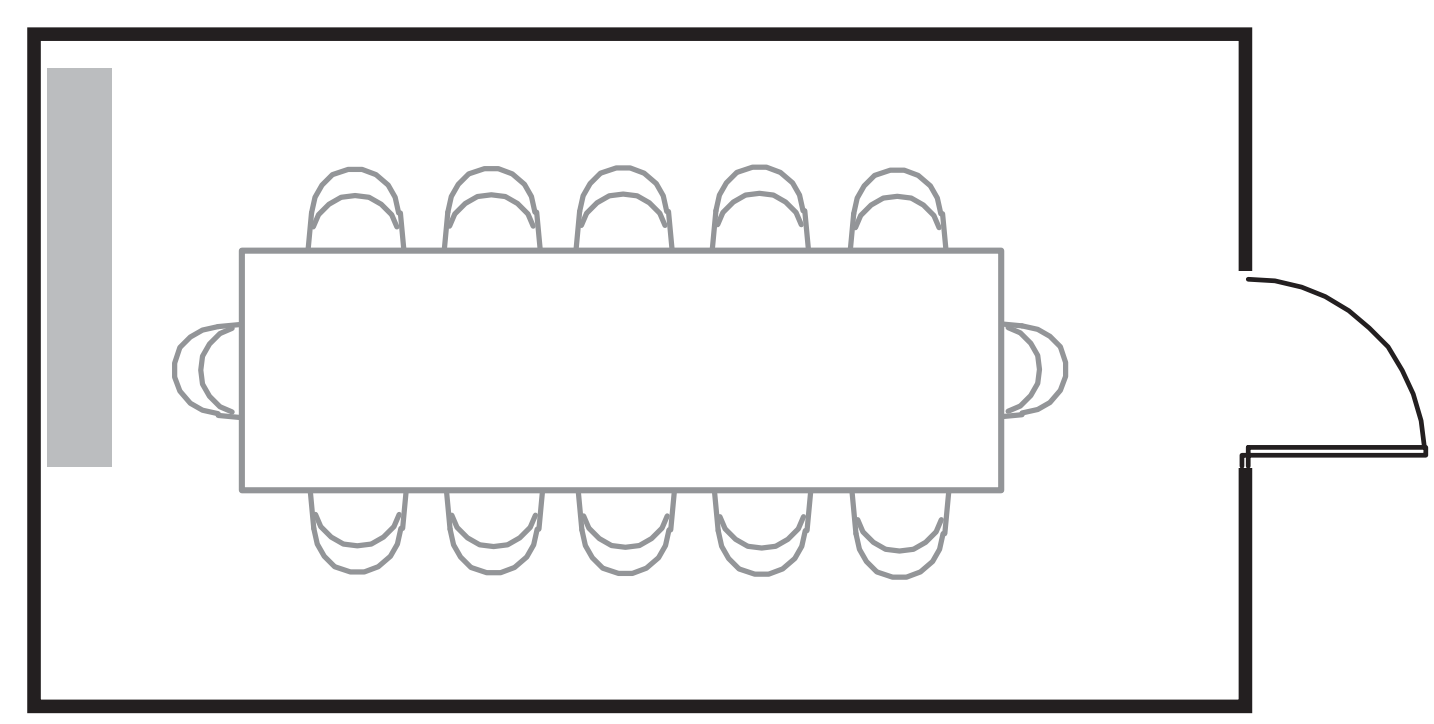
CASABLANCA HOTEL  
147 West 43rd Street  
New York, NY 10036



The Casablanca Board Room features: 50" computer/TV screen, DVD capabilities; Internet Access and Power Hook-up built in to conference table that can connect laptops with TV screen; Dry Erase Board and Bulletin Board; Access to Photocopier; Color Printer and FAX machine.

Room Dimensions: 22 ft x 113 ft  
Capacity: 12 ppl  
Table: 12 ft x 4 ft

To schedule your event contact the Casablanca Hotel at [events@casablancahotel.com](mailto:events@casablancahotel.com) or 212-201-1155

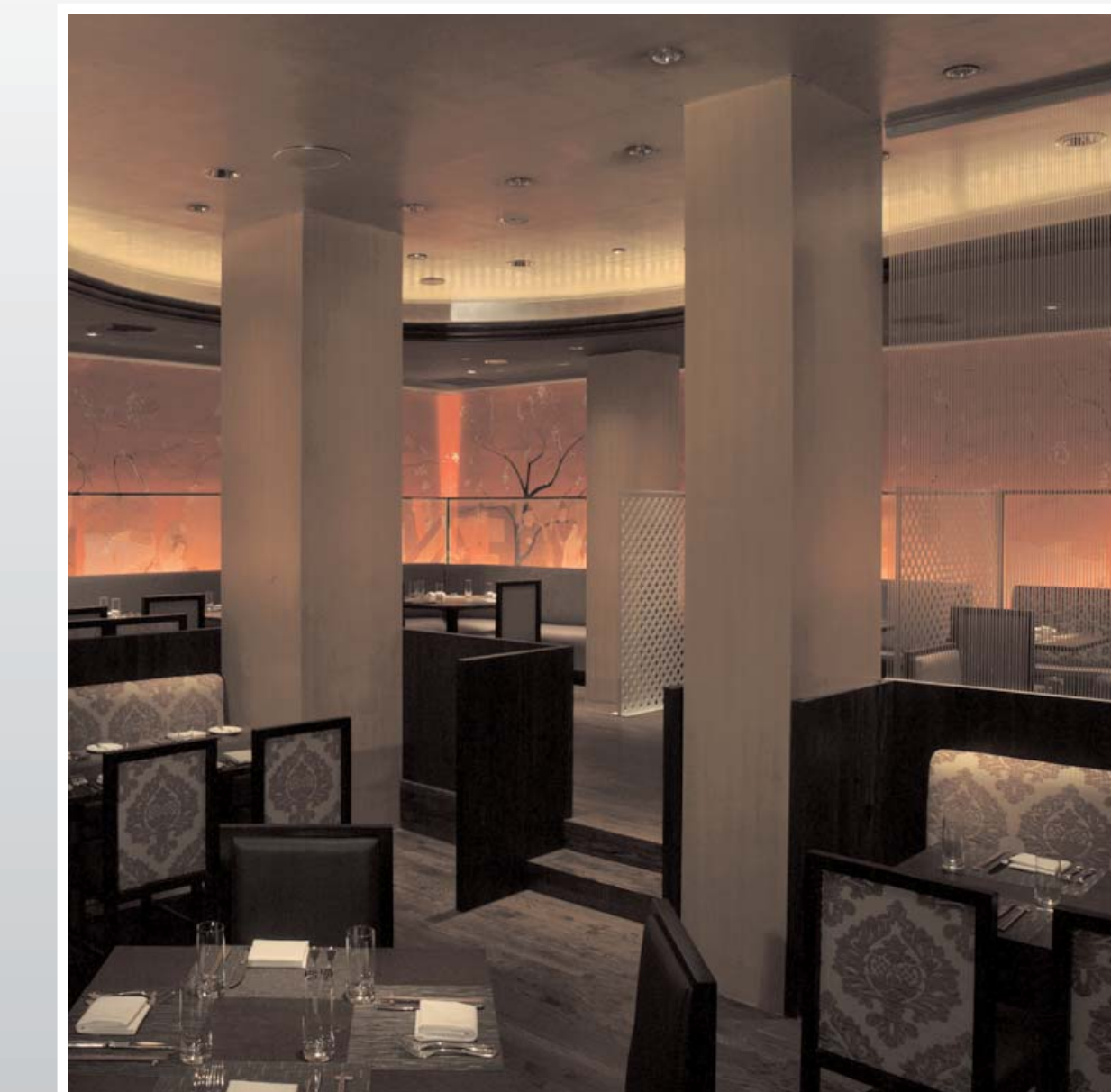


### Tony's Di Napoli

AT THE HOTEL CASABLANCA

Tony's di Napoli Restaurant: has served up some of the best Old New York Italian favorites since Tony opened his first location in 1959.

A private room is available for large groups.



### Monkey Bar

AT THE HOTEL ELYSEE

Monkey Bar, a New York mainstay for over 70 years, has reopened with a stunning redesign and an Asian-Inspired menu. Designer Stephanie Goto left the irreverent monkeys in place and reenergized the dining room with a vibrant red mural peppered with dark brown trees, bright white flowers and four monkeys amidst the landscape.

[www.hkhotels.com](http://www.hkhotels.com)